



OAKLAND

DOING WHAT'S BEST.®

SPIRITUAL CARE SERVICES

McLaren Oakland - Pontiac

50 N. Perry Street

Pontiac, MI 48342

Phone: (248) 338-5738

mclaren.org/oakland

This brochure provides general information only. It does not constitute medical or legal advice and may not apply to your individual situation.

MO-390 (01.19)



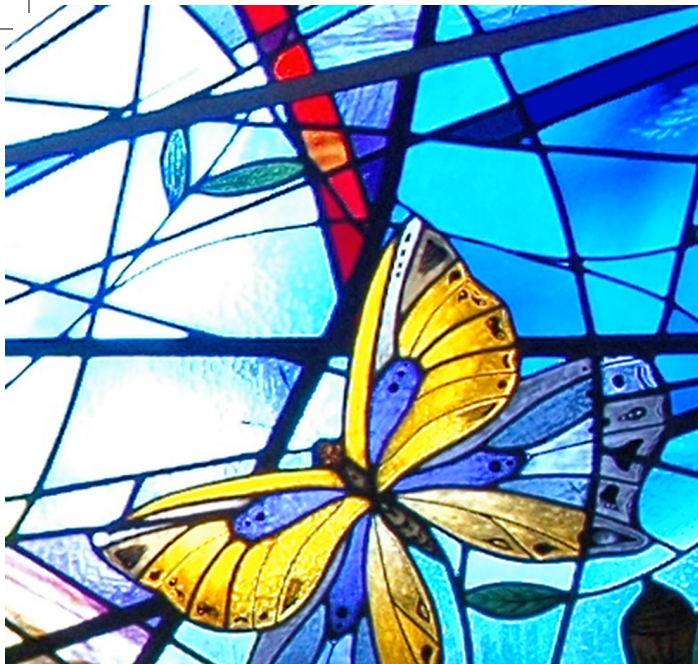
McLAREN OAKLAND SPIRITUAL CARE SERVICES



OAKLAND

DOING WHAT'S BEST.®

mclaren.org/oakland



SPIRITUAL AND RELIGIOUS BELIEFS ARE IMPORTANT DIMENSIONS OF HUMAN WHOLENESS AND THE HEALING PROCESS.

Available 24/7, the Staff Chaplain and the Spiritual Care Volunteers provide support to all inpatient and outpatient units of the hospital, including the Emergency Department.

Spiritual Care utilizes pastoral visits, crisis intervention and collaboration with hospital professionals to provide for the spiritual and emotional needs of patients, their families, other supportive persons, and hospital staff in order to promote physical, spiritual and emotional health and wholeness.

Spiritual Care practices a ministry of presence requiring active listening skills and empathy and providing nonjudgmental support within the context of the patient's culture, values, and belief systems.

Spiritual Care provides professional chaplaincy assistance regarding:

- General spiritual and emotional assessments and care, including psychosocial issues
- Helps facilitate conflict resolution
- Appropriate worship services and liturgical and sacramental ministries for patients, families, and staff
- Helps facilitate decision making discussions regarding execution of advance directives, end-of-life care and Gift of Life
- Transition to comfort care
- Funeral planning
- Grief and loss support and referrals to other resources

**The Chapel is located on the 2nd floor of
McLaren Oakland's West Tower**

**General Spiritual Care Visits
(248) 338-5350**

**Spiritual Care Office
(248) 338-5738**

**Email
michael.goddard@mcclaren.org**