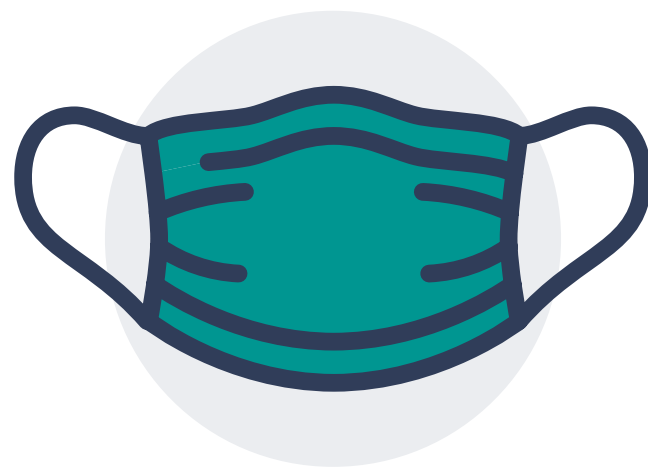


TOGETHER, WE ARE KEEPING YOU AND OUR PATIENTS SAFE.



Wear masks that cover your nose and mouth at all times.



N-95 masks must be worn by staff providing care to a COVID-positive or suspected patient.



Proper eye protection, including face shields, goggles, or other plastic barriers should be worn for all patient encounters.



Isolation gowns should be worn for COVID-positive or suspected patients. Gowns should be disposed of after each patient encounter and should not be shared.