

McLAREN OAK BRIDGE MULTI-DISCIPLINARY TREATMENT TEAM

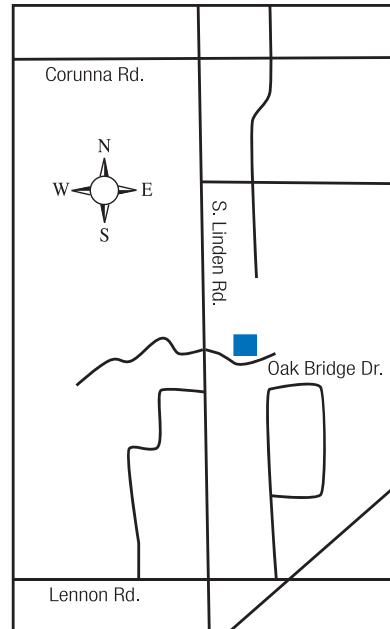
Our Multi-disciplinary team provides services to meet the treatment needs of our clients at the Partial Hospital Program.

Our staff includes:

- Psychiatrists
- Psychiatric Nurses
- Clinical Social Workers
- Master's Level Therapist
- Teachers
- Security

The programs consists of:

- Daily Face-to-Face Physician Consultation
- Comprehensive Assessment
- Medication Management
- Insight Oriented Group Therapy
- Family Therapy/Education
- Recreational Therapy
- Anger Management
- Expressive Therapy
- Conflict Resolution
- School Education Programming
- Discharge Planning



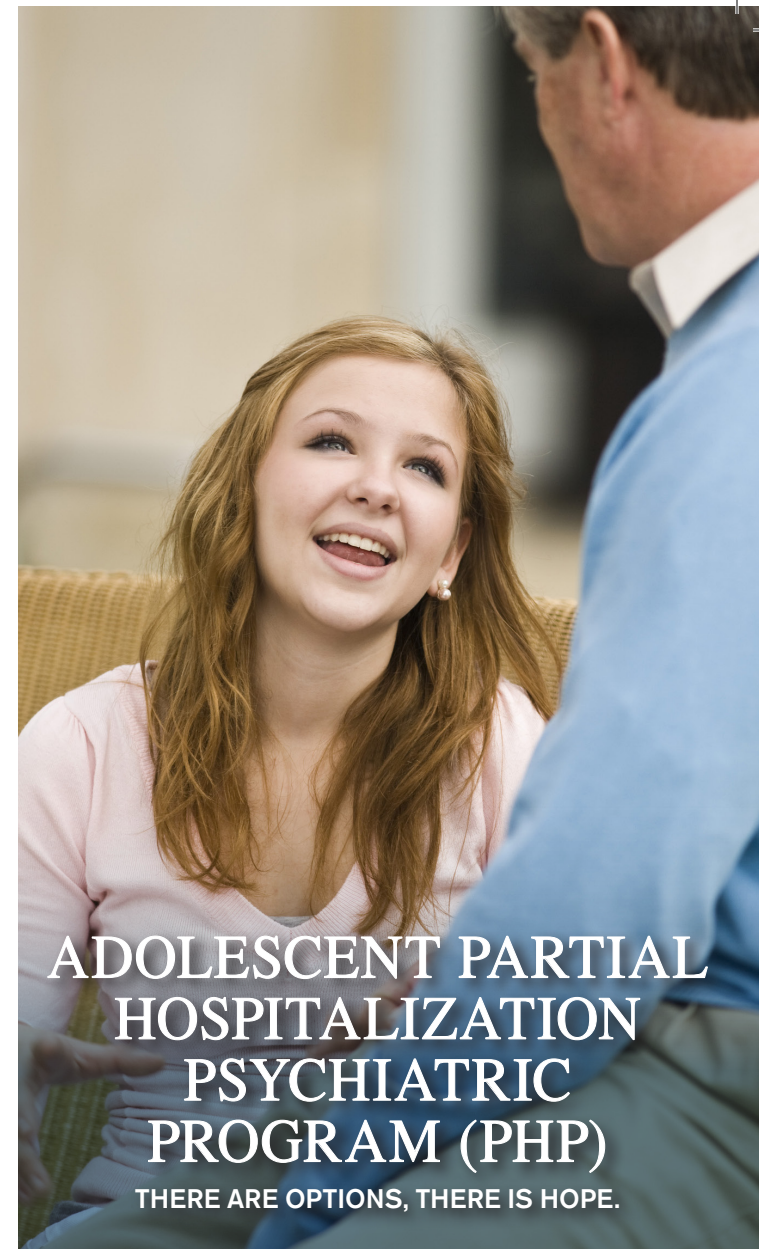
FLINT

DOING WHAT'S BEST.

Oak Bridge Partial Hospital Program
in the Oak Creek Office Center
(South of Corunna Road just off Linden Road)
4448 Oak Bridge Drive
Flint, Michigan 48532
Phone: (810) 342-5333
Fax: (810) 342-5342

mclaren.org/flint

M-3041 (08.18)



ADOLESCENT PARTIAL
HOSPITALIZATION
PSYCHIATRIC
PROGRAM (PHP)

THERE ARE OPTIONS, THERE IS HOPE.



FLINT

DOING WHAT'S BEST.

mclaren.org/flint



HELP, HEALING, HOPE

PARTIAL HOSPITAL PSYCHIATRIC PROGRAM (PHP)

McLaren Regional Medical Center's Partial Hospitalization Program (PHP) is Genesee County's only day treatment program for adolescent and adult clients in need of person-centered intensive daily psychiatric services that meet with physicians face-to-face daily. PHP is designed to allow intervention to prevent inpatient psychiatric hospitalization or provide transition for client's stepping down from inpatient care.

Client's consult with an attending psychiatrist five days per week and are actively involved in daily group therapy, educational groups and activity therapy.

Clients are assigned to a care navigator who assists them through the treatment program, help clients identify ways to meet their treatment goals, and assist with follow up appointments to return to referral sources and make additional appointments as needed.

INSURANCE

McLaren's Partial Hospital Program accepts most insurance plans including Medicare and Medicaid. All Medicaid clients must be assessed by county of origin CMH agencies to be referred to the Partial Hospital Program.

SCHEDULE

McLaren's PHP runs five days per week Monday through Friday from 9 am to 3 pm.

REFERRAL

A professional referral is required for admission to PHP. This can include Psychiatrist and Primary Care Physicians, Nurses, Social Workers and Therapists, Principals, Teachers and School Counselors, EAP reps, and Court personnel.

TRANSPORTATION TO PHP

Transportation is provided to clients who would not otherwise be able to attend if the client lives within the van pick-up radius.

McLAREN ADOLESCENT PHP

McLaren's Adolescent Partial Hospital Program provides intensive psychiatric treatment intervention for client's ages 12 to 17 years old. The Multi-disciplinary team provides treatment for a wide variety of mental illnesses including ADD, ADHD, Bipolar Illnesses, Depression or Schizoaffective disorders.

Educational intervention and services are also integrated into McLaren's Partial Hospital Programming. An Intermediate School District Consultant provides school liaison services so adolescents can be integrated back into school programming without being overwhelmed. PHP also provides school transition so adolescents can implement newly learned coping mechanisms and return to PHP programming to discuss progress.